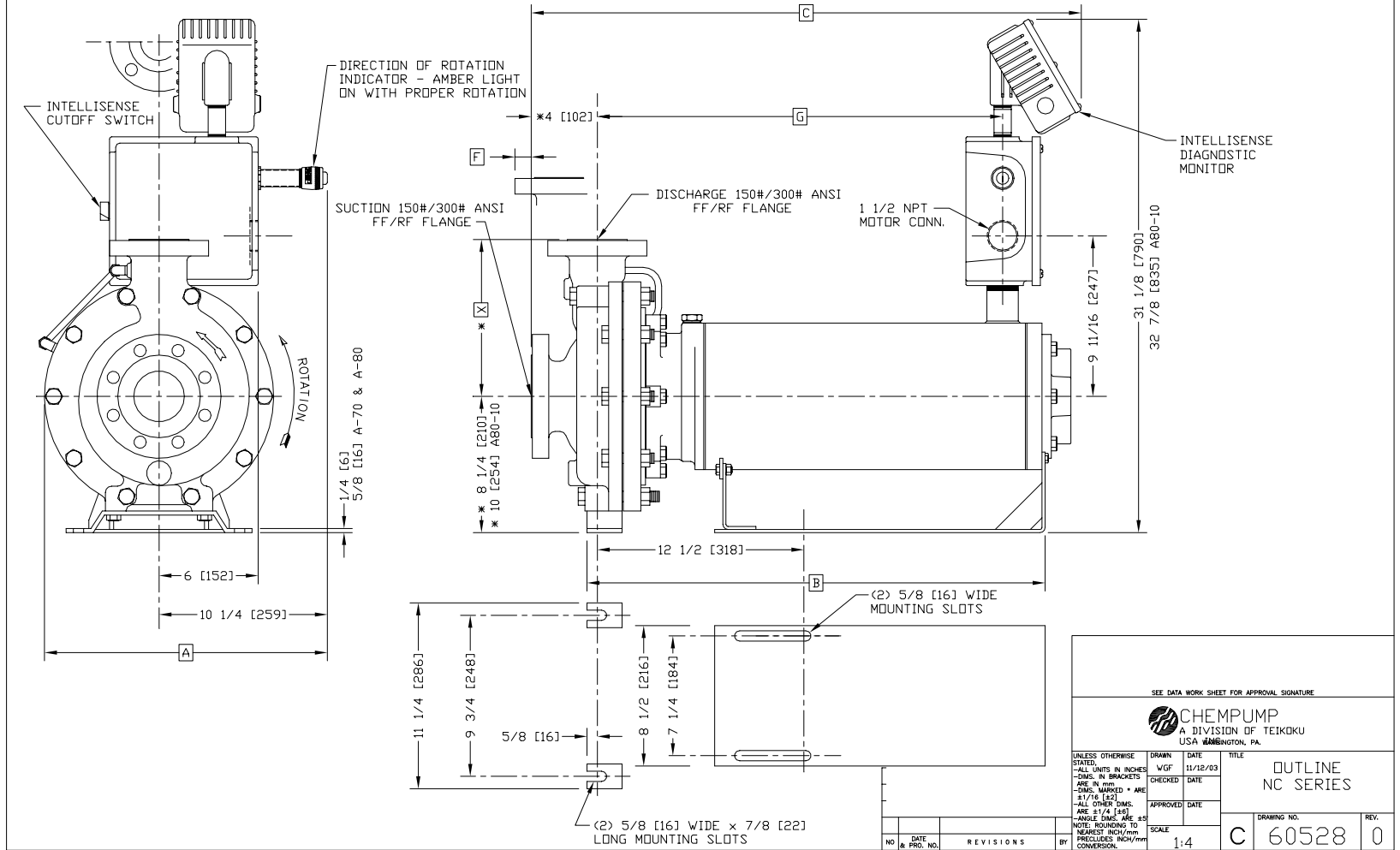


A80	6X4X10	13 1/2 [343]	17 1/2[445]	1 [25]							23 1/2 [597]	28 11/16 [729]	19 15/16 [506]	25 [635]	30 3/16 [767]	21 7/16 [545]	29 [737]	34 3/16 [868]	25 7/16 [646]
A70	4x3x10	11 [280]	17 3/16[437]	1/8 [3]	N/A	N/A	N/A	N/A	N/A	N/A	23 1/4 [591]	28 7/16 [722]	19 11/16 [500]	24 3/4 [629]	29 15/16 [760]	21 3/16 [538]	28 3/4 [730]	33 15/16 [862]	25 3/16 [640]
A70	4X3X8	11 [280]	17 3/16[437]	1/8 [3]							23 11/16 [602]	28 15/16 [735]	20 3/16 [513]	25 3/16 [640]	30 7/16 [773]	21 11/16 [551]	29 3/16 [741]	34 7/16 [875]	25 11/16 [653]
A60	3x2x10	9 1/2 [241]	17 7/16[443]	--															
A50	3x1-1/2x10	8 1/2 [216]	17 3/16[437]	--															
A05	2x1x10	8 1/2 [216]	17 1/8[435]	--	19 [483]	24 9/16 [624]	15 13/16 [402]	20 [508]	25 9/16 [649]	16 13/16 [427]	22 1/4 [565]	27 13/16 [706]	19 1/16 [484]	23 3/4 [603]	29 5/16 [745]	20 9/16 [522]	27 3/4 [705]	33 5/16 [846]	24 9/16 [624]
A60	3x2x8	9 1/2 [241]	17 3/16[437]	--															
A50	3x1-1/2x8	8 1/2 [216]	17 3/16[437]	--															
ANSI SIZE	SUCTIONxDISCHARGEx IMPELLER DIAMETER	[X]	[A]	[F]	[B]	[C]	[G]	[B]	[C]	[G]	[B]	[C]	[G]	[B]	[C]	[G]	[B]	[C]	[G]
					N1 (L1) MOTOR			N2 (L2) MOTOR			N3 (L3) MOTOR			N4 (L4) MOTOR			N5 (L5) MOTOR		



SEE DATA WORK SHEET FOR APPROVAL SIGNATURE

CHEMPUMP
A DIVISION OF TEIKOKU
USA WASHINGTON, PA.

UNLESS OTHERWISE STATED:
-ALL UNITS IN INCHES
-DIMS. IN BRACKETS ARE IN MM
-DIMS. MARKED * ARE ±1/16 (±1)
-ALL OTHER DIMS. ARE ±1/4 (±1)
-ANGLE DIMS. ARE ±5
NOTE: ROUNDING TO NEAREST INCH/mm PRECLUDES INCH/mm CONVERSION.

DRAWN	DATE	TITLE
WGF	11/12/03	OUTLINE NC SERIES
CHECKED	DATE	
APPROVED	DATE	

DRAWING NO. **C 60528** REV. **0**

SCALE 1:4